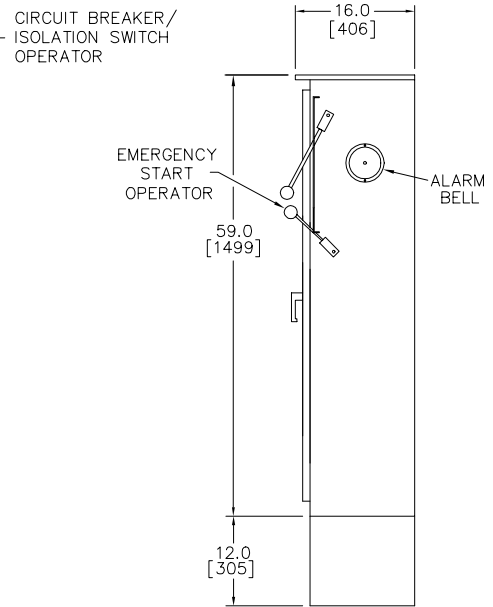
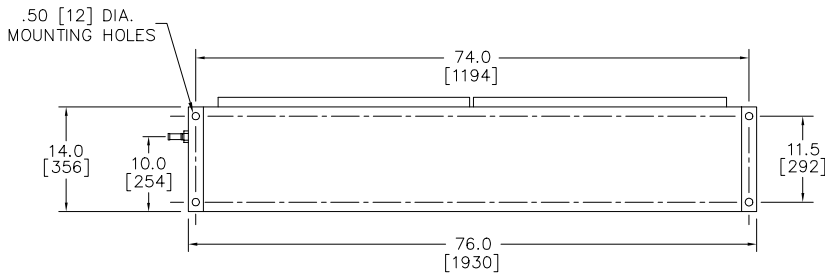


FRONT VIEW



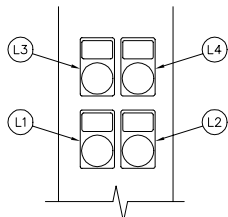
SIDE VIEW



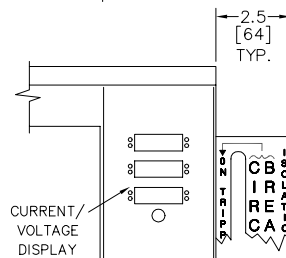
BOTTOM VIEW

PILOT DEVICE LEGEND
LEFT FLANGE

- L1. SWITCH IN EMERGENCY LIGHT
- L2. PUSH TO TEST BUTTON
- L3. SWITCH IN NORMAL LIGHT
- L4. EMERGENCY ISO SW. OPEN LIGHT

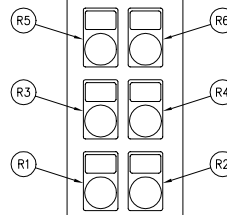


PILOT DEVICE DETAIL
LEFT FLANGE



PILOT DEVICE LEGEND
RIGHT FLANGE

- R1. START PUSH BUTTON
- R2. SOFT STOP PUSH BUTTON
- R3. POWER ON LIGHT
- R4. COAST STOP PUSH BUTTON
- R5. PHASE REVERSAL LIGHT
- R6. DRIVE FAULT LIGHT



PILOT DEVICE DETAIL
RIGHT FLANGE

VOLTAGE	HORSEPOWER
200V	15-40 HP.
208V	15-40 HP.
230V	15-50 HP.
380V, 415V	15-75 HP.
460V	15-100 HP.

NOTES:
ALL DIMENSIONS IN INCHES
AND MILLIMETERS ()

DRAWN SR 2-10-98 CHECK KH. 2-21-98 APPD J.A. 2-21-98	METRON, INC. DENVER, CO.		
		ENCLOSURE DIMENSIONS MODEL M700 W/TRANSFER SWITCH 76" CABINET ELECTRIC FIRE PUMP CONTROLLER	CD32942B
		SCALE N.T.S.	SHEET 1 OF 1